

## Test Report

No. NGBML1101135601

Date: 18 Nov 2011

Page 1 of 5

HANG ZHOU ZHENGCHIDA PRECISION MACHINERY CO.,LTD  
LONGMA VILLAGE JINCHENG TOWN,LINAN,HANGZHOU CITY,CHINA.

The following sample(s) was/were submitted and identified on behalf of the clients as : HIGH PROPORTION ALLOY OSCILLATING WEIGHT

SGS Job No. : NBMLC111100046 - NB  
Manufacturer : HANG ZHOU ZHENGCHIDA PRECISION MACHINERY CO.,LTD  
Date of Sample Received : 14 Nov 2011  
Testing Period : 14 Nov 2011 - 18 Nov 2011  
Test Requested : Selected test(s) as requested by client.  
Test Method : Please refer to next page(s).  
Test Results : Please refer to next page(s).

Signed for and on behalf of  
SGS-CSTC Ltd.



LiuXiaoRong, Sharon  
Approved Signatory

This document is issued by the Company subject to its General Conditions of Service printed overleaf, available on request or accessible at [http://www.sgs.com/terms\\_and\\_conditions.htm](http://www.sgs.com/terms_and_conditions.htm) and, for electronic format documents, subject to Terms and Conditions for Electronic Documents at [www.sgs.com/terms\\_e-document.htm](http://www.sgs.com/terms_e-document.htm). Attention is drawn to the limitation of liability, indemnification and jurisdiction issues defined therein. Any holder of this document is advised that information contained hereon reflects the Company's findings at the time of its intervention only and within the limits of Client's instructions, if any. The Company's sole responsibility is to its Client and this document does not exonerate parties to a transaction from exercising all their rights and obligations under the transaction documents. This document cannot be reproduced except in full, without prior written approval of the Company. Any unauthorized alteration, forgery or falsification of the content or appearance of this document is unlawful and offenders may be prosecuted to the fullest extent of the law. Unless otherwise stated the results shown in this test report refer only to the sample(s) tested.

Attention: To ensure the authenticity of testing /inspection report & certificate, please contact us at telephone: (86-755)83071443, or email: [CN.Doccheck@sgs.com](mailto:CN.Doccheck@sgs.com)

Test Results :

Test Part Description :

| Specimen No. | SGS Sample ID    | Description     |
|--------------|------------------|-----------------|
| 1            | NGB11-011356.001 | GERY METAL RING |

Remarks :

- (1) 1 mg/kg = 1 ppm = 0.0001%
- (2) MDL = Method Detection Limit
- (3) ND = Not Detected ( < MDL )
- (4) "-" = Not Regulated

**RoHS Directive 2011/65/EU**

Test Method : With reference to IEC 62321:2008

- (1) Determination of Cadmium by ICP-OES.
- (2) Determination of Lead by ICP-OES.
- (3) Determination of Mercury by ICP-OES.
- (4) Determination of Hexavalent Chromium by Spot test / Colorimetric Method using UV-Vis.
- (5) Determination of PBBs / PBDEs by GC-MS.

| Test Item(s)               | Limit | Unit  | MDL | 001      |
|----------------------------|-------|-------|-----|----------|
| Cadmium (Cd)               | 100   | mg/kg | 2   | ND       |
| Lead (Pb)                  | 1,000 | mg/kg | 2   | ND       |
| Mercury (Hg)               | 1,000 | mg/kg | 2   | ND       |
| Hexavalent Chromium (CrVI) | -     | -     | ◇   | Negative |
| Sum of PBBs                | 1,000 | mg/kg | -   | ND       |
| Monobromobiphenyl          | -     | mg/kg | 5   | ND       |
| Dibromobiphenyl            | -     | mg/kg | 5   | ND       |
| Tribromobiphenyl           | -     | mg/kg | 5   | ND       |
| Tetrabromobiphenyl         | -     | mg/kg | 5   | ND       |
| Pentabromobiphenyl         | -     | mg/kg | 5   | ND       |
| Hexabromobiphenyl          | -     | mg/kg | 5   | ND       |
| Heptabromobiphenyl         | -     | mg/kg | 5   | ND       |
| Octabromobiphenyl          | -     | mg/kg | 5   | ND       |
| Nonabromobiphenyl          | -     | mg/kg | 5   | ND       |
| Decabromobiphenyl          | -     | mg/kg | 5   | ND       |
| Sum of PBDEs               | 1,000 | mg/kg | -   | ND       |
| Monobromodiphenyl ether    | -     | mg/kg | 5   | ND       |

This document is issued by the Company subject to its General Conditions of Service printed overleaf, available on request or accessible at [http://www.sgs.com/terms\\_and\\_conditions.htm](http://www.sgs.com/terms_and_conditions.htm) and, for electronic format documents, subject to Terms and Conditions for Electronic Documents at [www.sgs.com/terms\\_e-document.htm](http://www.sgs.com/terms_e-document.htm). Attention is drawn to the limitation of liability, indemnification and jurisdiction issues defined therein. Any holder of this document is advised that information contained hereon reflects the Company's findings at the time of its intervention only and within the limits of Client's instructions, if any. The Company's sole responsibility is to its Client and this document does not exonerate parties to a transaction from exercising all their rights and obligations under the transaction documents. This document cannot be reproduced except in full, without prior written approval of the Company. Any unauthorized alteration, forgery or falsification of the content or appearance of this document is unlawful and offenders may be prosecuted to the fullest extent of the law. Unless otherwise stated the results shown in this test report refer only to the sample(s) tested.

Attention: To ensure the authenticity of testing / inspection report & certificate, please contact us at telephone: (86-755)83071443, or email: [CN.Doccheck@sgs.com](mailto:CN.Doccheck@sgs.com)

# Test Report

No. NGBML1101135601

Date: 18 Nov 2011

Page 3 of 5

| <u>Test Item(s)</u>      | <u>Limit</u> | <u>Unit</u> | <u>MDL</u> | <u>001</u> |
|--------------------------|--------------|-------------|------------|------------|
| Dibromodiphenyl ether    | -            | mg/kg       | 5          | ND         |
| Tribromodiphenyl ether   | -            | mg/kg       | 5          | ND         |
| Tetrabromodiphenyl ether | -            | mg/kg       | 5          | ND         |
| Pentabromodiphenyl ether | -            | mg/kg       | 5          | ND         |
| Hexabromodiphenyl ether  | -            | mg/kg       | 5          | ND         |
| Heptabromodiphenyl ether | -            | mg/kg       | 5          | ND         |
| Octabromodiphenyl ether  | -            | mg/kg       | 5          | ND         |
| Nonabromodiphenyl ether  | -            | mg/kg       | 5          | ND         |
| Decabromodiphenyl ether  | -            | mg/kg       | 5          | ND         |

**Notes :**

(1) The maximum permissible limit is quoted from directive 2011/65/EU, Annex II

(2) ◇ Spot-test:

Negative = Absence of CrVI coating, Positive = Presence of CrVI coating;

The tested sample should be further verified by boiling-water-extraction method if the spot test result is Negative or cannot be confirmed.

◇ Boiling-water-extraction:

Negative = Absence of CrVI coating; Positive = Presence of CrVI coating

The detected concentration in boiling-water-extraction solution is equal or greater than 0.02 mg/kg with 50 cm<sup>2</sup> sample surface area.

For corrosion protection coatings on metals: Information on storage conditions and production date of the tested sample is unavailable and thus results of Cr(VI) represent status of the sample at the time of testing

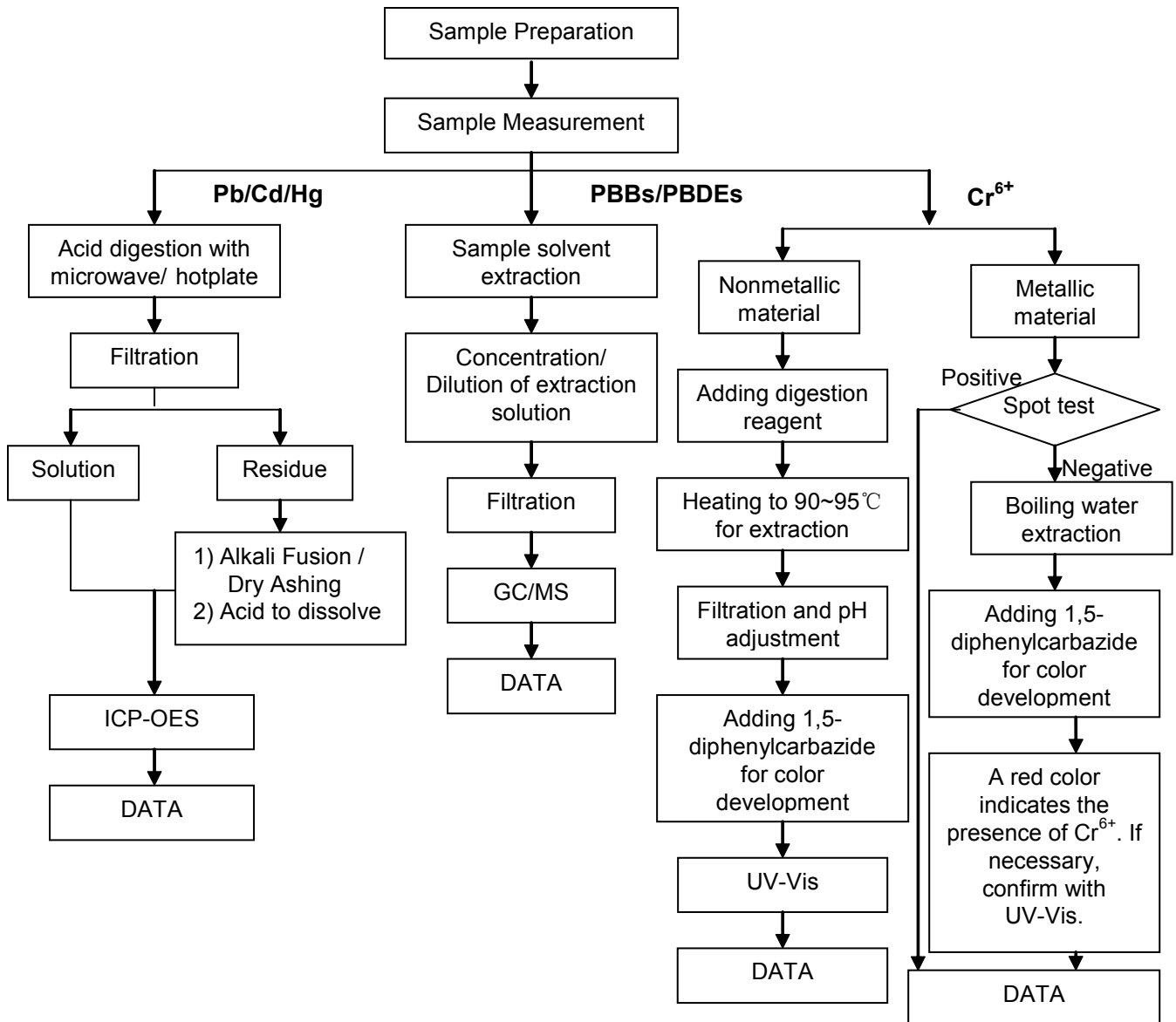
This document is issued by the Company subject to its General Conditions of Service printed overleaf, available on request or accessible at [http://www.sgs.com/terms\\_and\\_conditions.htm](http://www.sgs.com/terms_and_conditions.htm) and, for electronic format documents, subject to Terms and Conditions for Electronic Documents at [www.sgs.com/terms\\_e-document.htm](http://www.sgs.com/terms_e-document.htm). Attention is drawn to the limitation of liability, indemnification and jurisdiction issues defined therein. Any holder of this document is advised that information contained hereon reflects the Company's findings at the time of its intervention only and within the limits of Client's instructions, if any. The Company's sole responsibility is to its Client and this document does not exonerate parties to a transaction from exercising all their rights and obligations under the transaction documents. This document cannot be reproduced except in full, without prior written approval of the Company. Any unauthorized alteration, forgery or falsification of the content or appearance of this document is unlawful and offenders may be prosecuted to the fullest extent of the law. Unless otherwise stated the results shown in this test report refer only to the sample(s) tested.

Attention: To ensure the authenticity of testing / inspection report & certificate, please contact us at telephone: (86-755)83071443, or email: [CN.Doccheck@sgs.com](mailto:CN.Doccheck@sgs.com)

ATTACHMENTS

RoHS Testing Flow Chart

- 1) Name of the person who made testing: Tyler Jia/ Kell Li / Pearson Zhou
- 2) Name of the person in charge of testing: Sharon Liu
- 3) These samples were dissolved totally by pre-conditioning method according to below flow chart. (Cr<sup>6+</sup> and PBBs/PBDEs test method excluded)



This document is issued by the Company subject to its General Conditions of Service printed overleaf, available on request or accessible at [http://www.sgs.com/terms\\_and\\_conditions.htm](http://www.sgs.com/terms_and_conditions.htm) and, for electronic format documents, subject to Terms and Conditions for Electronic Documents at [www.sgs.com/terms\\_e-document.htm](http://www.sgs.com/terms_e-document.htm). Attention is drawn to the limitation of liability, indemnification and jurisdiction issues defined therein. Any holder of this document is advised that information contained hereon reflects the Company's findings at the time of its intervention only and within the limits of Client's instructions, if any. The Company's sole responsibility is to its Client and this document does not exonerate parties to a transaction from exercising all their rights and obligations under the transaction documents. This document cannot be reproduced except in full, without prior written approval of the Company. Any unauthorized alteration, forgery or falsification of the content or appearance of this document is unlawful and offenders may be prosecuted to the fullest extent of the law. Unless otherwise stated the results shown in this test report refer only to the sample(s) tested.

Attention: To ensure the authenticity of testing / inspection report & certificate, please contact us at telephone: (86-755)83071443, or email: [CN.Doccheck@sgs.com](mailto:CN.Doccheck@sgs.com)

Sample photo:



SGS authenticate the photo on original report only

\*\*\* End of Report \*\*\*

This document is issued by the Company subject to its General Conditions of Service printed overleaf, available on request or accessible at [http://www.sgs.com/terms\\_and\\_conditions.htm](http://www.sgs.com/terms_and_conditions.htm) and, for electronic format documents, subject to Terms and Conditions for Electronic Documents at [www.sgs.com/terms\\_e-document.htm](http://www.sgs.com/terms_e-document.htm). Attention is drawn to the limitation of liability, indemnification and jurisdiction issues defined therein. Any holder of this document is advised that information contained hereon reflects the Company's findings at the time of its intervention only and within the limits of Client's instructions, if any. The Company's sole responsibility is to its Client and this document does not exonerate parties to a transaction from exercising all their rights and obligations under the transaction documents. This document cannot be reproduced except in full, without prior written approval of the Company. Any unauthorized alteration, forgery or falsification of the content or appearance of this document is unlawful and offenders may be prosecuted to the fullest extent of the law. Unless otherwise stated the results shown in this test report refer only to the sample(s) tested.

Attention: To ensure the authenticity of testing / inspection report & certificate, please contact us at telephone: (86-755)83071443, or email: [CN.Doccheck@sgs.com](mailto:CN.Doccheck@sgs.com)